

## Cystatin C

**Catalog Number:** 21108

**Gene Symbol:** Cystatin C

**Description:** Anti-Cystatin C Rabbit Polyclonal Antibody

**Background:** Cystatin C, belongs to the cystatin family, is an inhibitor of cysteine proteinases, and is thought to serve an important physiological role as a local regulator of this enzyme activity. It is secreted. Cystatin C is expressed in the highest levels in the epididymis, vas deferens, brain, thymus and ovary and the lowest in the submandibular gland. It is a potential cerebrospinal fluid marker for the diagnosis of Creutzfeldt-Jakob disease.

**Immunogen:** A synthetic peptide from the internal region of Cystatin C, human origin.

**Tested Applications:** ELISA, WB, IHC, IP

**Recommended Dilutions:**

ELISA: 1:100-1:5000

WB: 1:100-1:1000

IHC: 1:100-1:1000

**Concentration:** 0.1 mg/ml

**Host:** Rabbit

**Clonality:** Polyclonal

**Isotype:** IgG

**Purity:** Purified from serum

**Format:** Liquid

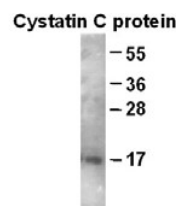
**Preservative:** No

**Constituents:** PBS (without  $Mg^{2+}$  and  $Ca^{2+}$ ), pH 7.4, 150 mM NaCl, 50% glycerol.

**Species Reactivity:** Cystatin C antibody recognizes Cystatin C proteins of vertebrates.

**Storage Conditions:** Store at  $-20^{\circ}C$ . Avoid freeze / thaw cycles.

### Western blot:



WB: Anti-Cystatin C pAb

### Western blot analysis of recombinant full length Cystatin C protein.

Purified His-tagged Cystatin C protein (Cat. # 10157) with anti-Cystatin C polyclonal antibody (Cat. # 21108) at 1:100 dilution.

FOR RESEARCH USE ONLY. NOT FOR DIAGNOSTIC APPLICATIONS